



ANNOUNCING NEW 2011 ANNUAL SPRING EVENT April 8, 2011

Something for everyone in a learning, networking, and supportive setting.

- * Hot Topic
- * Guest Speaker
- * Promotional Sales
- * Scholarships & Awards
- * Dinner
- * Gifts

*And More

Details to follow in the Spring 2011 Newsletter

Social Media in Public Higher Education

Staying Connected at a “Higher” Level



Facebook. Twitter. LinkedIn. It's virtually impossible for a day to go by and not hear these words. Over 500 million users are on Facebook, and that number is growing daily. People use Social Media to reconnect with friends, find old classmates, past loves, network with professional colleagues, and have fun. Working in the higher education industry it is not only ideal to understand and utilize Social Media - it is a necessity.

For many who don't actively use Social Media, it is a tough sell. This medium of communication and interaction didn't exist just a short time ago, so often the argument of "I never needed it before" comes into play. However, Colleges and Universities across the world are finding this method of connecting even more ideal than the telephone or written word. It won't necessarily replace these more trusted forms of communication, but can, when used properly, enhance one's efforts.

Today's traditional college or university student is well connected and often demands instant results with almost everything. They are doers, quick-movers, and want to control the way the world turns. These traits are all thanks to Social Media and the result of an individual who grew up surrounded by technology. It doesn't make them better or worse in the classroom per se, but it requires us as educators to understand what works with these students and to incorporate those details in how we reach out, educate and engage.

On April 8th, please join MWPHE for our Annual Spring Conference as we take Social Media to a “Higher” Level. We will feature a panel of our own peers – colleagues who have incorporated Social Media effectively into their areas of Higher Education, embracing the medium to help students understand and communicate more globally while learning how to effectively and positively use Social Media for their benefit. We'll hear from faculty, librarians, and administrators on how they have brought Social Media into their everyday work. We'll also have a “Social Media in Higher Ed 101” session to overview what Social Media sites are hot now and are up and coming. If you are a die-hard Social Media user or just looking to get started, this conference is for you! We look forward to seeing you there!





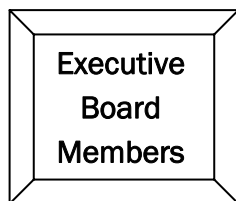
HOW TO REGISTER FOR THE ANNUAL CONFERENCE ON APRIL 8, 2011

REGISTER NOW!

It's easier than ever to register for a conference. All you need to do to access the registration form is go to www.mwphe.org, click on the "registration form" link to the right of the home page. Complete the form and e-mail it to mwphe@hotmail.com. Please forward your payments as soon as possible after you have registered. Remember, there are no cancellation dates after [March 21, 2011](#). Substitutions are allowed for those who are originally registered but are unable to attend.

If you would prefer to mail a printed copy of your registration form, please do so to:

Tracy Charbonnier
Bridgewater State University
c/o Academic Affairs
131 Summer Street
Bridgewater, MA 02325



MISSION STATEMENT



The mission of Massachusetts Women in Public Higher Education (MWPHE) is to strengthen the status of women as professionals. The organization advances the role of women in public higher education by presenting speakers, workshops, and forums which advance our agenda of funding professional development opportunities, influencing the quality and diversity of public higher education in Massachusetts, articulating the concerns of women, providing recognition awards to women students who exemplify the objectives of the organization, and granting automatic membership to all eligible women whose schools are on the Member Institutions list.

Visit our Website at:
www.mwphe.org





A Message from
the President

Happy Fall!

I hope you have all enjoyed a smooth start to the fall semester. So many exciting things have been happening around the campuses of our public higher education institutions, including the renaming of our state colleges to state universities. Now that's something to be proud of!

Over the summer I was very fortunate to take office as MWPHE's President at a successful summer retreat with our Executive Board and several campus coordinators. We celebrated our two successful conferences and have come even closer to becoming a full 501c3 non-profit organization. With a tight fiscal situation around the world and on our campuses, we strive to continue to provide affordable workshops and learning opportunities through our conferences, offer monetary professional development opportunities for females in the public higher education sector and scholarship opportunities for female students who have overcome great obstacles to better themselves through education.

At our retreat we made some exciting changes to the way we do business. This year we are pleased to announce we will be holding ONE annual conference, shifting from our prior bi-annual format. This year's conference, "Social Media in Higher Education: Staying Connected at a Higher Level" will be held on Friday, April 8, 2011 at Tucker's Restaurant in Southwick, MA. I hope you all plan to save the date and join your fellow colleagues across the state for our not-to-be-missed ANNUAL CONFERENCE!

My best wishes to you all and I look forward to seeing you all in April!

My very best,

Kelly

AWARDS

Get your application **NOW** for the Spring 2011 Award Celebration



Student Achievement Scholarship Awards — \$750

The Student Achievement Scholarship Award committee will be granting scholarships in the amount of \$750 to Three deserving women at the spring conference. Awards are based on academic and personal achievement.

Please see our website, www.mwphe.org for information on criteria, application form and last year's recipients. All application forms need to be submitted to your MWPHE campus coordinator no later than February 11, 2011



Professional Development Awards— \$1,000

Consider applying for one of the three Professional Development Awards that will be presented at our Spring Conference. The awards of \$1,000 each are granted to MWPHE members from each sector - University, State College and Community College.

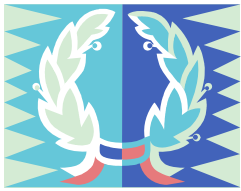
In reviewing applications, the Committee seeks to support members of MWPHE in professional development opportunities that are of high quality and that are congruent with the organization's mission and goals.

Completed applications must be submitted electronically to Patricia Hanrahan at hanrahanp@gcc.mass.edu no later than February 28, 2011. If you would like to apply, download guidelines and application at <http://www.mwphe.org/professionaldevelopment/guidelines.html>



Award Recipients
Honored

AWARD CELEBRATION AT 2010 SPRING CONFERENCE



Student Achievement Scholarship Award

Chair
Tina Bones



Jeanne Dee,
Quinsigamond Community College



Candace Chan,
UMASS/Dartmouth



Elizabeth Scarbrough,
Bridgewater State University



Kim Rodrigues,
Bristol Community College

Professional Development Award

Chair
Patricia Hanrahan



Ernie Greendale,
Northern Essex Community College



Autumn Grant,
Bridgewater State University



Co-winner Jane Sackett,
(not pictured) Co-winner Diane Forman Judd,
University of Massachusetts Amherst

Congratulations to All



HEALTHY LIVING IN A STRESSFUL WORLD SPRING 2010 CONFERENCE RECAP!



Dr. Jean Anliker

MWPHE's Spring Conference brought us out to the middle of the state where we left our desks for the day and came together for a bit of stress relief at The Manor in West Boylston. We welcomed Dr. Jean Anliker of UMass Amherst, who shared some wonderful advice to the group on maintaining a healthy lifestyle in this very stressful world we live in. Dr. Anliker's realistic advice resonated with the group, and we all left with some very solid ideas on how to incorporate relaxation into our busy lives in moments each day. Following Dr. Anliker's presentation we began our awards presentation honoring four students with our Student Achievement Scholarship Award and three administrators with our Professional Development Awards. We rounded out our meeting with an exciting raffle featuring many enticing prizes including beautiful gift baskets and generous gift certificates. Our day ended with an overview of the upcoming year and our attendees left refreshed and ready to hit the ground running!

Our attendees were very generous in their donations for our featured charity organization, The Worcester Food Bank. We had several boxes of canned and dry goods that filled the truck when the Food Bank came to pick it all up.



This fabulous day was a success thanks to the hard work of our volunteers, campus coordinators and executive board. We are hard at work planning this spring's Annual Conference. Thank you to all who attended and we look forward to seeing you this spring!



Thank You



Lots of Great Give-a-ways

Generous Food donations





EXECUTIVE BOARD ELECTIONS

REGISTER TO RUN FOR OFFICE

MWPHE's executive board will hold its annual spring elections during the 2011 spring conference. Votes will be taken for four **member-at-large** positions:

- * 1 state university seat for re-election
- * 1 vacant community college seat
- * 1 community college seat for re-election
- * 1 community college seat for re-election

If you or someone you know would be interested in running for the board, please send a picture (if possible) and a short bio of yourself as well as why you are interested in becoming a member of the board to

jgraham@bhcc.mass.edu no later than **March 31, 2011**

Each person's bio information will be shared with everyone at the conference to cast their vote. The winners will be announced at the end of the conference. Best of luck!



Achievement & Recognition



Mission to Haiti

Quinsigamond Community College Professors **Susan Johnson, Peg McGrath** and **Cheryl Finn** were part of a Medical Mission Team that served at Mission of Hope in Grand Goave, Haiti in March 2010. As part of a 9-member Team, the three helped establish medical clinics that ultimately served over 300 Haitians.

The American Library Association (ALA)

The American Library Association Emerging Leaders Program, now in its fifth year, kicks off with a daylong session during the 2011 ALA Midwinter Meeting in San Diego. **Teri Shiel** of Westfield State University and the secretary of MWPHE has been selected through a very competitive process for the program this year.

The program enables librarians and library staff from across the country to participate in project planning workgroups and have an opportunity to serve the profession in a leadership capacity early in their careers.



Thoughts

You don't get paid for the hour. You get paid for
the value you bring to the hour.

Jim Rohn

The MWPHE newsletter is produced each spring and fall semester.

To submit copy for the publication, contact Sheryl Yardie at stardie@gcc.mass.edu



NEW HIRES / PROMOTIONS



January 2010—July 2010

Bridgewater State University

Kelley Baran, Assistant Director Financial Aid
 Amy Beaulieu **promoted** Comptroller
 Jeanne Brown, Assistant Director of Donor Relations
 Amy Call, Staff Assistant
 Rosemaria Carozzi, Assistant Director International Programs
 Patricia Connolly **promoted** Assistant Director of Disability Resources
 Elizabeth Dubuque **promoted** Associate Director of Development
 Marian Extejt, Dr., Dean School of Business
 Mary Rose Guillette **promoted** Staff Associate Information Technology
 Karen Jason **promoted** Associate Vice President Facilities Mgmt
 Patricia Jones **promoted** Assistant Director Computing Support Services
 Kelly Hess **promoted** Staff Assistant External Affairs
 Shelly Kenniston **promoted** Associate Director Student Affairs
 Kathleen Kirby **promoted** Executive Director CONNECT
 Melinda Lamoureux **promoted** Assistant Director Facilities Mgmt & Planning
 Jessica Lang **promoted** Director Office of Student Conduct
 Sasha Link, Staff Assistant, Coordinator of Government Relations
 Diane Nelson **promoted** Staff Associate Facilities Mgmt & Planning
 Anne Pascucci, Director Grants and Sponsored Projects
 Christine Pellegrini, Major Gifts Officer
 Diane Place **promoted** Associate Director Financial Aid
 Keri Powers **promoted** Associate V.P. Human Resources
 Roopa Rawjee, Director Center for International Engagement
 Jenny O. Shanahan, Director Undergraduate Research
 Pamela Spillane **promoted** Staff Associate Academic Achievement Center
 Cynthia Sweeney **promoted** Assistant Director Financial Aid
 Janet Taylor **promoted** Assistant Registrar
 Suzanne Tjoelker **promoted** Assistant Director /Assistant Registrar

Bristol Community College

Angela Boffi **promoted** Special Programs Coordinator - Taunton
 Larisa Kradinova, Assistant Professor of Developmental Writing
 Meghan Abella-Bowen **promoted** Senior Spe-

cial Programs Coordinator (SAGE)
 Phoebe Blackburn **promoted** Dean of Business & Information Management
 Barbara Cadima **promoted** EDP Entry Operator III - Facilities
 Bernadette Driscoll **promoted** Acting Dean of Adult Basic Education and Workplace Literacy
 Nancy Evans **promoted** Department Chair of Nursing Program
 Julia Gold, Director for Renewable Energy and Green Jobs
 Geraldine Hamel **promoted** Assistant Professor of Nursing (Pediatric/Fundamentals)
 Melissa Mello **promoted** Receiving Teller I
 Philicia Pacheco **promoted** Buyer II
 Linda Roberts **promoted** Maintainer I
 Joy Rose, Interim Department Chair for Healthcare Information Technology
 Everilis Santana, Assistant Professor of Developmental Mathematics
 Patricia Schryver, Assistant Professor of Nursing
 Susan Souza-Mort **promoted** Assistant Director - WISE Woman Grant Coordinator
 Patricia Willard, Assistant Professor of Dental Hygiene

Bunker Hill Community College

Tracy L. Deveau, Staff Assistant, President's Office
 Anne Hyde, Executive Director of Development and Executive Director of the BHCC Foundation
 Amanda Montgomery, Clerk V, Academic Affairs and Student Services

Framingham State University

Anupama Bhagat, Administrative Assistant II
 LaDonna Bridges, Director of Academic Support
 Deborah Dalton, Director of Students Accounts
 Jennifer Forsberg, Administrative Assistant II
 Whitney Jarnis, Clerk IV
 Barbara Masi, Director of Assessment
 Linda Nesta, Staff Associate Business Office
 Barbara Parece, Staff Assistant/Admissions Counselor
 Maria Quiray, Director of Annual Giving
 Dawn Ross, Staff Assistant/ Internship Coordinator
 Jacqueline Travers, Administrative Assistant I
 Linda Vaden-Goad, Vice President of Academic Affairs
 Ellen Zimmerman, Assoc. Vice President for Academic Affairs

Greenfield Community College

Linda Desjardins, Director of Financial Aid
 Karen Phillips, Comptroller
 Patricia Hanrahan, Associate Degree Nursing Program Director

Alexandra Floratos, part-time MassGREEN Grant Coordinator

Holyoke Community College

Johanna Lebron, Assistant Bursar
 Ruth McGrath, Director of Administrative Computing/Database Administrator
 Kate Sullivan, Business Account Rep
 Cathy Clemmitt, Staff Assistant, Nursing Lab
 Janine Desgres, Title III Career Development Counselor
 Elisabeth Cantor, Learning Resource Specialist
 Michelle Sherlin, Simulation Learning Lab Coordinator
 Yanina Vargas-Arriaga, **promoted** Interim Vice President for Student Affairs
 Joan Giovaninni, **promoted** Interim Director of STRIVE Program

Massachusetts Maritime Academy

Susan McHugh, Director of Health Services
 Patricia White, Assistant Director of Cooperative Education/Career Services
 Elizabeth Stevenson, **promoted** to Dean Enrollment Services
 Elizabeth Benway, **promoted** to Director Human Resources/Affirmative Action
 Jane Joska, **promoted** to Staff Assistant, DGCE

Mount Wachusett Community College

Brenda Bourgeois, Clerk V
 Janice Barney **promoted** Dean Bus., Scr., Tech
 Karen Costa **promoted** Director of Student Success
 Joyce Cravedi, Comptroller
 Robin Duncan **promoted** VP Marketing & Communication
 Kathleen Fillion, Education Specialist
 Eleanor Gauthier, Maintainer II
 Veronica Guay **promoted** Community Partnerships Coordinator
 Angela Hall, Site Assistant Coordinator
 Constance Helstowski **promoted** Director/Payroll & Benefits
 Susan LaBonte **promoted** Academic Liaison/Leominster
 Kathleen Laperriere, Administrative Assistant I
 Patrice Lincoln **promoted** Fiscal Director
 Tammi M Lloyd, Bookkeeper I
 Sarah McMaster, Coord/Institute for Non Profit
 Laurene Minns, Storekeeper IV
 Charity Parker, Accountant I

JSharyn Rice **promoted** Sr. VP Advan & Exter
Limari Rivera, Academic Counselor
Diane Ruksnaitis **promoted** VP HR & AA
Melissa Sargent promoted Director LLL Credit Programs
Tracy Sheridan, Staff Assistant
Linda Trowbridge, Dir Institute for Non Profit

North Shore Community College

Amanda Abreau, Academic Counselor
Lucy Bayard, Disabilities Counselor
Linda Brantley, Director, Public Relations and New Media
Tryntje Bumgardner, Payroll Supervisor
Kim Bushey, Academic Fieldwork Coordinator
Diane Dickerson, Interim Director, Student Support Services TRIO
Andrea Milligan, Director, Distance Learning & Instructional Media
Ina Resnikoff, Learning Specialist
Kelly Scimone, Special Program Coordinator
Thea Soohoo, Academic Counselor
Joanne Sullivan, Grants Writer
Kelly Sullivan, Director Project Grad

Northern Essex Community College

Glenys Crane-Emerson, Staff Assistant
Family Sign Language
Trisha Foster, Administrative Assistant II
Foundational Studies & Liberal Arts
Laurie Gordy, Assistant Dean Liberal Arts Program
Elsa Jimenez, Academic Counselor
Cristina Nuncio, Academic Counselor
Kersten Theberge, Staff Assistant PACE
Allison Kaplan, Academic Counselor
Orquidea Tavares **promoted** Senior Financial Aid Counselor
Despina Lambropoulos **promoted** Senior Financial Aid Counselor
Jessica Cogswell **promoted** Director Financial Planning & Analyses
Amy Kelly **promoted** Coordinator Student Activities
Sandra Savage **promoted** EDP Entry Operator IV
Susan Callahan **promoted** EDP Entry Operator IV
Mary DeBenedetto **promoted** EDP Entry Operator IV
Analuz Garcia **promoted** Senior Financial Aid Counselor
Linda Hummel Shea **promoted** Assistant Dean Library Services
Bonnie Doherty **promoted** Director Academic Advising
Kathy Riviezzo **promoted** Database Administrator
Joan Scionti **promoted** ERP Project Leader
Tommie Corbett **promoted** EDP Systems Analyst III
Donna Ashbrook **promoted** Accountant III
Brittany Debity **promoted** Director of

Financial Aid
Maureen O'Leary **promoted** Manager Marketing Communications
Margaret Pothier **promoted** Coordinator Learning Resources

Quinsigamond Community College

Jacqueline Rodriquez, Senior Financial Aid Counselor
Rose Pavlov, Asst. Prof. Human Services
Stacey Kadish, Senior Research Analyst
Kathleen Goozey, Senior Financial Aid Counselor
Rebecca Cyr, Sr Financial Aid Counselor
Lucinda Costa **promoted** Staff Asst. Community Engagement
Constance Jeha, Accountant I
Michelle McCrillis **promoted** Senior Enrollment Counselor
Deborah H Gonzalez, Director of Community Bridges
Kathleen O'Connor, Specialist-Corporate Training
Rebecca Brownstein, Senior Enrollment Counselor
Beatrice Torres, Clerk III-Southbridge
Elsie Newmame, **promoted** Clerk IV-Career & Academic Advisement
Kathleen Radley, Mgr. Educational Partnership
Mishawn Davis-Eyene, Associate Director of Admissions
Jeanne Mahan, Sr Financial Aid Counselor
Dawn Toomey, Science Lab Mgr
Meridith Weston, FT Faculty, Advanced Placement Nurse Ed Program/AND
Jennifer McKeon, FT Faculty ,Dental Assisting /Dental Hygiene
Anita Podmanablan, Faculty Physical Science /Envir. Science
Mariela Salas de la Cruz, Faculty Physical Science/Envir. Science
Colleen Carelli, AND & Practical Nursing
Michelle Savrann, Faculty, Occupational Therapy
Asst Program Mary L. Bruni Faculty - Nursing
JoAnne Gleason, Asst. Prof of Respiratory Care
Brenda Kuchnicki, Clerk III Career Placement Services/Exp Based Ed
Carmen R. Hastings, Clerk III Enrollment

Roxbury Community College

Darlene Thorpe, **promoted** Administrative Assistant I
Maryam Mirza, **promoted** Help Desk Manager/IT Specialist

Springfield Technical Community College

Leslie Hoffman, Mass Green Coordinator
Amy Beth, Dean of Library Services
Diane Chapin-Brady, Campus Police Officer I
Jennifer Sanchez, Academic Counselor
Wendy Masiuk, Director of Public Safety
Jessica Hill, Academic Counselor
Maria Tirado , Typist II

Westfield State University

Ojae Michal Beale, Associate Dean, DGCE Academic Programs
Katheryn Bradford **promoted** Director, Alumni Programs

Chaitali Brahmabhatt, Staff Assistant, Urban Education Program Academic Counselor
Denise Browne **promoted** Staff Assistant
Kelly Galanis **promoted** Associate Director, Alumni Services
Patricia Gardner, Director Center for Teacher Education and Research
Kelly Hart, Director Admission
Jessica Hufnagle, Assistant Director Residential Life
Barbara Laffert **promoted** Staff Assistant, Counselor
Monique Lopez **promoted** Assistant Registrar
Marsha Marotta **promoted** Dean, Undergraduate Studies
Maureen McCartney, Associate Dean, Academic Retention
Kim Morgan **promoted** Staff Assistant Student Affairs
Elizabeth Preston **promoted** Dean of Faculty
Azanda Seymour **promoted** Staff Associate, Academic Advising
Cynthia Siegle **promoted** Director, International Programs
Laurie Simpson **promoted** Director, Academic Advising
Kimberly Tobin **promoted** Dean Graduate and Continuing Education



College Presidents

COMMUNITY COLLEGES

Dr. Paul Raverta Berkshire Community College	Dr. John J. Sbraga Bristol Community College	Dr. Mary L. Fifield Bunker Hill Community College	Dr. Kathleen Schatzberg Cape Cod Community College	Dr. Robert L. Pura Greenfield Community College
Dr. William F. Messner Holyoke Community College	Dr. Carole M. Berotte Joseph MassBay Community College	Dr. Charles Wall Massasoit Community College	Dr. Carole A. Cowan Middlesex Community College	Dr. Daniel M. Asquino Mount Wachusett Community College
Dr. Wayne M. Burton North Shore Community College	Dr. David Hartleb Northern Essex Community College	Dr. Gail E. Carberry Quinsigamond Community College	Dr. Terrence A. Gomes Roxbury Community College	Dr. Ira H. Rubenzahl Springfield Technical Community College

STATE COLLEGES & UNIVERSITIES

Dr. Dana Mohler-Faria Bridgewater State University	Dr. Timothy J. Flanagan Framingham State University	Dr. Katherine H. Sloan Massachusetts College of Art and Design	RADM Richard G. Gurnon Massachusetts Maritime Academy
Dr. Mary K. Grant Massachusetts College of Liberal Arts	Dr. Patricia Maguire Meservey Salem State University	Dr. Evan Dobelle Westfield State University	Dr. Janelle C. Ashley Worcester State University

UNIVERSITY CAMPUSES

Dr. Robert C. Holub University of Mass. Amherst	Dr. Keith Motley University of Mass. Boston	Dr. Jean MacCormack University of Mass. Dartmouth	Dr. Martin T. Meehan, J.D. University of Mass. Lowell	Michael F. Collins, MD Office of the Chancellor University of Massachusetts Medical
--	--	--	--	--

Executive Board 2010—2011

Kelly Galanis President Westfield State University	Debra Ferullo President-Elect Framingham State University	Judith Graham Past President Bunker Hill Community College	Dr. Patricia Hanrahan Professional Development Chair Greenfield Community College	Limari Rivera Campus Coordinator Liaison Mt. Wachusett Community College
Tina Bones Student Achievement Scholarship Awards Chair Westfield State University	Teri Shiel Secretary Westfield State University	Lisa Grosshart Webmaster, Archive Chair Bridgewater State University	Sheryl Tardie Publications Designer Quinsigamond Community College	Carol Patterson Public Relations Chair Photography Coordinator Holyoke Community College
Members-at-Large: Linda DiPasqua Massasoit Community College	Dr. Pat Mercaitis UMass Amherst	Danielle Bramucci Westfield State University	Karen Desjeans Holyoke Community College	Tracy Charbonnier Treasurer Bridgewater State University

Campus Coordinators 2010—2011

COMMUNITY COLLEGES

Christine DeGregorio Berkshire Community College	April Bellafiore Bristol Community College	Beverly Lewis Bunker Hill Community College	Kathleen Clarke Cape Cod Community College	Karen Phillips Greenfield Community College
Karen Desjeans Holyoke Community College	Robin Nelson-Bailey MassBay Community College	Linda DiPasqua Massasoit Community College	Kathleen Sweeney Middlesex Community College	Diane Ruksnaitis Mount Wachusett Community College
Gay Roland North Shore Community College	Thomasine Corbett Northern Essex Community College	Lisa Palmer Quinsigamond Community College	Nancy Sheehan-Curran Erica Rivers Roxbury Community College	Vonetta Smith Springfield Technical Community College

STATE COLLEGES & UNIVERSITIES

Lisa Grosshart Bridgewater State University	Christine Sacco Framingham State University	Kathryn Oram Massachusetts College of Art and Design	Christina Aquilano Massachusetts Maritime Academy
Ann Schulman Massachusetts College of Liberal Arts	Amie Goodwin Salem State University	Azanda Seymour Westfield State University	Martha Scheffer Worcester State University

UNIVERSITY CAMPUSES

Yvonne Kielb University of Mass. Amherst	Julie Sanabria & Rita Labad University of Mass. Boston	Dr. Juli L. Parker University of Mass. Dartmouth	Robin Toof & Judith Zanni University of Mass. Lowell	Wendy Judge University of Mass. Medical
--	--	--	--	---