



COME
CELEBRATE!

30 YEARS PROMOTING WOMEN
IN PUBLIC HIGHER EDUCATION

DON'T MISS THE ANNUAL SPRING CONFERENCE
AT SPINELLI'S RESTAURANT
LYNNFIELD, MASSACHUSETTS
FRIDAY, APRIL 13, 2012 AT 9:30 AM

SPRING CONFERENCE
Toxic Behavior in the Workplace

Interactions With Toxic Employees

* Bullying *Rudeness *Bossy *Controlling

We are fortunate to have a renowned speaker right here in New England. In this session, Suzanne Benoit, LCSW, SPHR, a leading expert on Toxic Employee bullying will help you to understand the difference between difficult and truly toxic coworkers; how they use informal power networks in the workplace; and what you can do to keep from being targeted. Understanding these dynamics are essential to mounting a plan to reverse negative tactics. In the end, there is only so much you can control. Ms Benoit will also cover how to increase your satisfaction at work even when there is chaos around you. Workshop activities will include large group discussions, providing technical information to the group and at least one small group activity to practice strategy development.

Suzanne V. Benoit, LCSW, SPHR is a nonprofit and small business operations consultant and author promoting mission stewardship for publicly funded groups. Ms. Benoit specializes in helping nonprofits and small businesses strategize to avoid crises and when necessary, manage and recover from them. Based in Maine, her background in commercial business, human resources, board governance and clinical social work allows her to craft unique solutions for the most complex small business challenges. Ms. Benoit has published works and conducted workshops on Board leadership, nonprofit efficiency, human resource management and clinical social work. Her 2011 Book: *"Toxic Employees: great companies resolve this problem, you can too!"* and workshops in this topic are very popular with workshop participants. Suzanne's workshops are described as "both entertaining and valuable" including tools for attendees' immediate use. For more information about the author please visit

<http://benoitcentral.wordpress.com/>



A Message from
the President

Greetings!

As we begin our 30 year Celebration of Massachusetts Women in Public Higher Education, I feel privileged and honored to serve as your President. This academic year should prove to be an exciting one for our membership as we celebrate 30 years of professional development opportunities for women in Massachusetts public higher education.

We received notification that MWPHE, Inc. is now an official 501(c) (3) non-profit public charity on May 5, 2011! This is an important accomplishment, and will lead to greater opportunities for our organization. Our goal is to further fundraising and philanthropic efforts in order to continue providing scholarships and professional development opportunities to women students, staff, and faculty in public higher education in the Commonwealth of Massachusetts. I found this to be a daunting task as the process was both challenging and labor intensive, yet extremely rewarding and I am glad to have served MWPHE, Inc. in this capacity. I am thankful to have had the support of our Executive Board during this process.

.....continued

A Message from the President cont...

A Message from the President
continued.....

Please save the date for our next Annual Conference which will be held on Friday, April 13, 2012 at Spinelli's in Lynnfield, Massachusetts. The theme will be "Toxic Behavior in the Workplace" with a keynote address by Suzanne V. Benoit, LCSW, SPHR. Ms. Benoit has authored several books on non profit management, financial tools, and human resource management among them "Toxic Employees: great companies resolve this problem, you can too!" She states that the purpose of all of her writing on this topic is "to empower management and coworkers to address abusive behavior in the workplace. Not only does this help to prevent victimization, but it helps to improve workplace culture and organizational success." This timely conference will provide you with some tools for empowerment over this kind of behavior in your workplace.

I look forward to meeting you and leading our organization in what will be a very exciting year and, as always, we welcome your ideas and comments regarding future events.

Please take a moment to view our website at www.mwphe.org.



The MWPHE newsletter is produced each spring and fall semester.

To submit copy for the publication, contact Sheryl Tardie at stardie@qcc.mass.edu

SPONSORING: ROSIE'S PLACE



HELP SUPPORT **Rosie's Place**..... Since 1974 poor and homeless women have found an oasis of hope and nourishment at Rosie's Place. The mission of Rosie's Place is to help women maintain their dignity, seek opportunity and find security in their lives.

Help donate by bringing to the conference **non-perishable food items**, particularly canned vegetables and fruits, cereal, peanut butter, pasta, rice, and non-refrigerated juices.

Many of the women they assist are working and in housing but simply can't make ends meet. Some are newly homeless, while others women have been living on the streets for years. They serve women as young as 18 and as old as 80. Approximately one-third of the guests have children.

Also, the *Women's Craft Cooperative* from Rosie's Place will be displaying a limited selection of handmade necklaces, earrings, pins, and bookmarks for sale as another way to support of this wonderful charity.

www.rosiesplace.org



HOW TO REGISTER FOR THE SPRING ANNUAL CONFERENCE ON APRIL 13, 2012

REGISTER NOW!

It's easier than ever to register for a conference. All you need to do to access the registration form is go to www.mwphe.org, click on the "registration form" link to the right of the home page. Complete the form and e-mail it to mwphe@hotmail.com. Please forward your payments as soon as possible after you have registered. **Remember, there are no cancellation dates after March 30, 2012.** Substitutions are allowed for those who are originally registered but are unable to attend.

If you would prefer to mail a printed copy of your registration form, please do so to:

Tracy Charbonnier
Bridgewater State University
c/o Academic Affairs
131 Summer Street
Bridgewater, MA 02325

..... Can You Use Some Extra Money?

AWARDS

Get your application **NOW** for the Spring 2012 Award Celebration

Student Achievement Scholarship Awards — \$750



The Student Achievement Scholarship Award committee will be granting scholarships in the amount of \$750 to three deserving women at the spring conference. Awards are based on academic and personal achievement.

Please see our website, www.mwphe.org for information on criteria, application form and last year's recipients. All application forms need to be submitted to your MWPHE campus coordinator no later than February 24, 2012. If you have any questions, please send an email to Kelly Galanis at kgalanis@westfield.ma.edu.

Professional Development Awards— \$1,000



Consider applying for one of the three Professional Development Awards that will be presented at our Spring Conference. The awards of \$1,000 each are granted to MWPHE members from each sector - University, State College and Community College.

In reviewing applications, the Committee seeks to support members of MWPHE in professional development opportunities that are of high quality and that are congruent with the organization's mission and goals.

Completed applications must be submitted electronically to Patricia Hanrahan at hanrahanp@gcc.mass.edu no later than February 24, 2012. If you would like to apply, download guidelines and application at <http://www.mwphe.org/professionaldevelopment/guidelines.html>

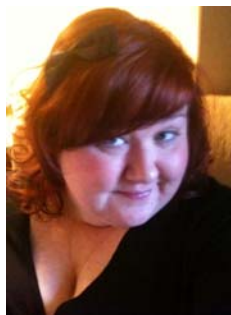
MWPHE, INC. PRESENTS OUR FIRST EVER PHENOMENAL WOMAN AWARD!

MWPHE, Inc. will be announcing its first ever Phenomenal Woman Award at our spring conference on Friday, April 13, 2012 at Spinelli's in Lynnfield and we invite you to nominate a ***Phenomenal Woman!***

Do you know a phenomenal woman on your campus? Does she go above and beyond the call of duty? Do you admire her? Does she inspire you? Is she a highly regarded individual who works tirelessly on behalf of your college community?

We are now accepting nominations. You can obtain a nomination form to fill out through your campus coordinator or on our website at www.mwphe.org. The deadline to submit your nomination is **Monday, February 20, 2012.**

All nominees and the winner will be notified in early March that they will be recognized at the spring conference. For further information please contact Judith Graham-Robey at jgraham@bhcc.mass.edu and be thinking about who you would like to nominate as a ***phenomenal woman!***



Kelly A. Galanis
Past-President

MWPHE Spring 2011 Conference Recap

Social Media

The Massachusetts Women in Public Higher Education had a wonderful turnout for the Annual Conference held at Tucker's Restaurant in Southwick on April 8, 2011. More than 150 women from higher education institutions across the state came out to Western Mass to learn all about the latest trends in Social Media and how they impact us in the higher education world.

We welcomed a panel of experts from our own schools – **Andrea Milligan**, Director of Distance Learning and Instructional Technology at North Shore Community College; **Cindy Kane**, Director of Student Involvement and Leadership at Bridgewater State University, and **Teri Shiel**, Reference and Information Instruction Librarian at Westfield State University. I was honored to moderate this panel of innovators as we discussed how Social Media has changed the way we do business, and how we must adapt and change to meet the needs of this generation of students.

After a delicious lunch from the staff at Tucker's, we were excited to learn of the winners of our Student Achievement Scholarship Awards, presented by chair Tina Bones. Students earning these awards have had an exceptional academic career often while faced with adversity and difficult setbacks to their lives. The winners for this year are:



Award Recipients
Honored

Taneisha Burton, Westfield State University

Monica Diaz, UMass Dartmouth

Laura Hurler, Holyoke Community College

Our Professional Development Awards were presented by chair Patricia Hanrahan. These awards are presented to women in public higher education to use towards furthering themselves professionally through conferences, classes, certifications, and the like. This year's winners included:

Gloria Lopez, North Shore Community College

Katie Munroe, Bridgewater State University

Donna Carpenter, UMass Amherst

Following the conference, the panelists hosted a Social Media 101 workshop for any conference attendees who wished to hone their skills further. This interactive demonstration got participants familiar with how to use big social media sites such as Facebook, Twitter and LinkedIn both on their computer and through smart technology like iPhones, Blackberries, and iPads.

On behalf of the Executive Board of MWPHE, we thank you all for attending our Annual Conference. Please mark your calendars for our next Annual Conference, Friday, April 13, 2012 at Spinelli's in Lynnfield where our theme will focus on how to handle a toxic environment. I hope you will join us!

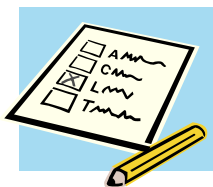


Fondly,

Kelly A. Galanis
Past-President

Thank You





EXECUTIVE BOARD ELECTIONS

REGISTER TO RUN FOR OFFICE

MWPHE's executive board will hold its annual spring elections during the 2012 annual conference on April 13th. We have five openings for our member-at-large positions:

- * 1 University seat for re-election
- * 2 State University seats for re-election
- * 2 Community College seats for re-election

If you or someone you know would be interested in running for the board, please send a picture (if possible) and a short bio of yourself as well as why you are interested in becoming a member of the board to kgalanis@westfield.ma.edu no later than March 30, 2012.

Each person's bio information will be shared with everyone at the conference prior to the vote. The winners will be announced at the end of the conference.

Best of luck!

TAX DEDUCTIBLE DONATIONS!



MWPHE, Inc. is now a non-profit, tax-exempt public charity under 501(c) 3 which means that contributions made to MWPHE, Inc. are now tax deductible. We sought 501(c) 3 status to allow us to seek additional sources of revenue in the form of tax deductible donations and grants so that we can offer more scholarships to eligible students attending our member schools.

If you have any questions or any ideas of how we can further our fund raising efforts please feel free to contact me at dferullo@framingham.edu. If anyone would like to make a charitable contribution to MWPHE, Inc., donations can be made payable to MWPHE, Inc. and can be sent to our Treasurer, Tracy Charbonnier, c/o Bridgewater State University, Academic Affairs, 131 Summer St., Bridgewater, MA 02325.



Don't forget to stop by for a visit at our website at www.mwphe.org

- * Register for the Spring Conference
- * Fill-out an Application for an Award
- * Nominate a Phenomenal Woman
- * Run for Office

OR read about Campus Happenings, Achievements & Recognition, New Hires & Appointments and much, much more.....

Be sure to look for our next newsletter in the Spring 2012!

College Presidents

COMMUNITY COLLEGES

Dr. Paul Raverta Berkshire Community College	Dr. John J. Sbraga Bristol Community College	Dr. Mary L. Fifield Bunker Hill Community College	Dr. Kathleen Schatzberg Cape Cod Community College	Dr. Robert M. Pura Greenfield Community College
Dr. William F. Messner Holyoke Community College	Dr. John O'Donnell MassBay Community College	Dr. Charles Wall Massasoit Community College	Dr. Carole A. Cowan Middlesex Community College	Dr. Daniel M. Asquino Mount Wachusett Community College
Dr. Wayne M. Burton North Shore Community College	Dr. Lane Glenn Northern Essex Community College	Dr. Gail E. Carberry Quinsigamond Community College	Dr. Terrence A. Gomes Roxbury Community College	Dr. Ira H. Rubenzahl Springfield Technical Community College

STATE COLLEGES & UNIVERSITIES

Dr. Dana Mohler-Faria Bridgewater State University	Dr. Timothy J. Flanagan Framingham State University	Dr. Dawn Barrett Massachusetts College of Art and Design	RADM Richard G. Gurnon Massachusetts Maritime Academy
Dr. Mary K. Grant Massachusetts College of Liberal Arts	Dr. Patricia Maguire Meservy Salem State University	Dr. Evan Dobelle Westfield State University	Dr. Barry Maloney Worcester State University

UNIVERSITY CAMPUSES

Dr. Robert C. Holub Chancellor University of Mass. Amherst	Dr. Keith Motley University of Mass. Boston	Dr. Jean MacCormack University of Mass. Dartmouth	Dr. Martin T. Meehan, J.D. University of Mass. Lowell	Michael F. Collins, MD Office of the Chancellor University of Massachusetts Medical
--	--	--	--	--

Executive Board 2011—2012

Debra Ferullo President Framingham State University	Karen Desjeans President-Elect Holyoke Community College	Tina Bones Public Relations Chair Westfield State University	Dr. Patricia Hanrahan Professional Development Chair Greenfield Community College	Limari Rivera Campus Coordinator Liaison Mt. Wachusett Community College
Kelly Galanis Past President Student Achievement Scholarship Awards Chair Westfield State University	Teri Shiel Secretary Westfield State University	Lisa Grosshart Webmaster Bridgewater State University	Sheryl Tardie Publications Designer Quinsigamond Community College	Judith A. Graham-Robey Phenomenal Woman Award Chair Bunker Hill Community College
Tracy Charbonnier Treasurer Bridgewater State University	Carol Patterson Photography Coordinator Holyoke Community College	Linda DiPasqua Member-at-Large Massasoit Community College	Dr. Pat Mercaitis Member-at-large UMass Amherst	

Campus Coordinators 2011—2012

COMMUNITY COLLEGES

Christine DeGregorio Berkshire Community College	April Bellafiore Bristol Community College	Beverly Lewis Bunker Hill Community College	Kathleen Clarke Cape Cod Community College	Karen Phillips Greenfield Community College
Carol Patterson Holyoke Community College	Robin Nelson-Bailey MassBay Community College	Linda DiPasqua Massasoit Community College	Kathleen Sweeney Middlesex Community College	Diane Ruksnaitis Mount Wachusett Community College
Gay Roland North Shore Community College	Tommie Corbett Northern Essex Community College	Vacant Quinsigamond Community College	Nancy Sheehan-Curran Erica Rivers Roxbury Community College	Vonetta Smith Springfield Technical Community College

STATE COLLEGES & UNIVERSITIES

Lisa Grosshart Bridgewater State University	Christine Sacco Framingham State University	Kathryn Oram Massachusetts College of Art and Design	Christina Aquilano Massachusetts Maritime Academy
Vacant Massachusetts College of Liberal Arts	Amie Goodwin Salem State University	Azanda Seymour Westfield State University	Martha Scheffer Worcester State University

UNIVERSITY CAMPUSES

Vanessa Kehler University of Mass. Amherst	Rita Labad University of Mass. Boston	Dr. Juli L. Parker University of Mass. Dartmouth	Robin Toof University of Mass. Lowell	Wendy Judge University of Mass. Medical
---	--	---	--	--